

ÇATALKÖY
TYPE -G
VILLA 7

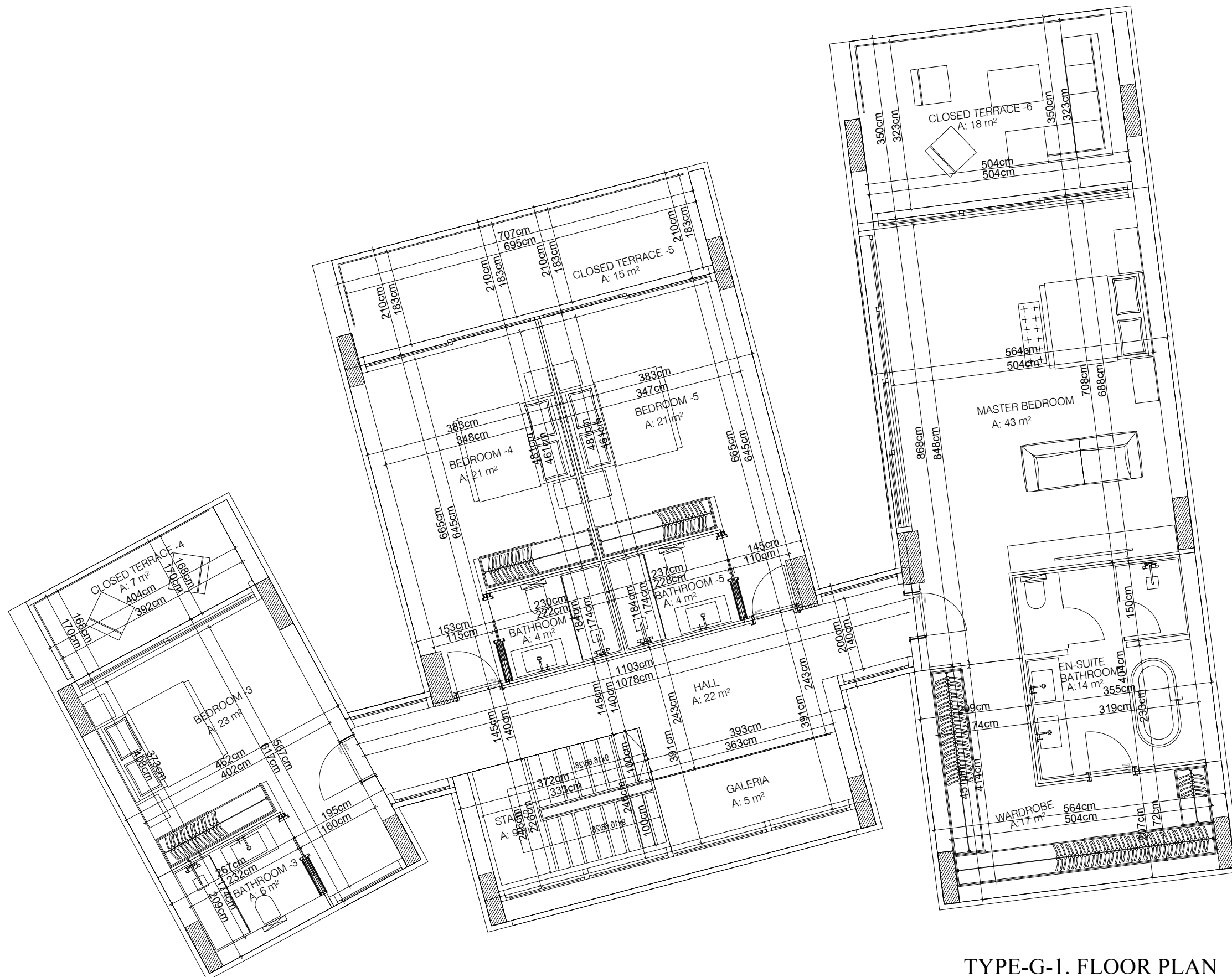
FIRST FLOOR
PLAN

Basement Floor Close Area: 197 m²
(55 m²+67 m²+33 m²+7 m²+35 m²+8 m²)

Ground Floor Closed Area: 246 m²
(Closed Areas- A:29 m²)
Open Terraces- A:54 m²

First Floor Close Area: 246 m²
(Closed Areas- A:40 m²)

Building Close Area:492 m²
Swimming Pool-A: 126 m²
Gross Area:892 m²



TYPE-G-1. FLOOR PLAN